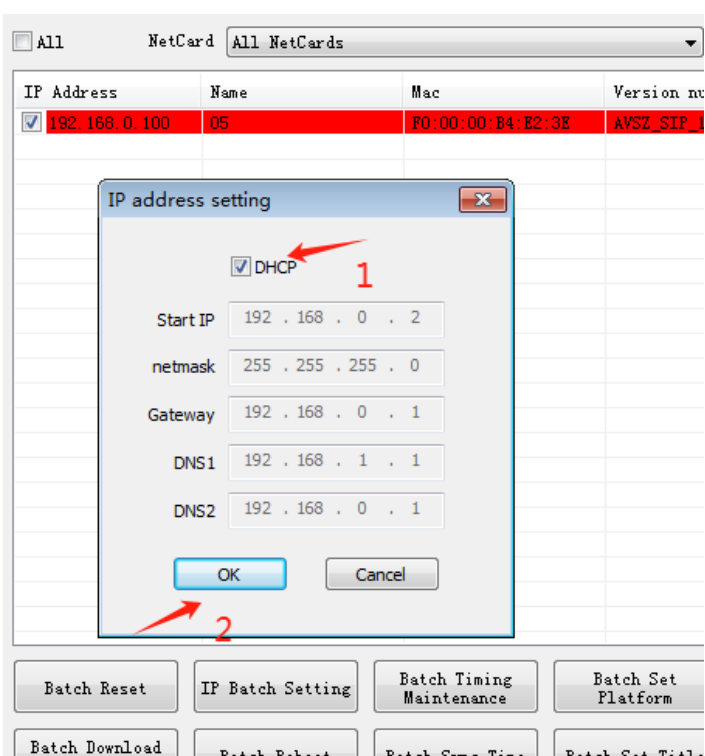
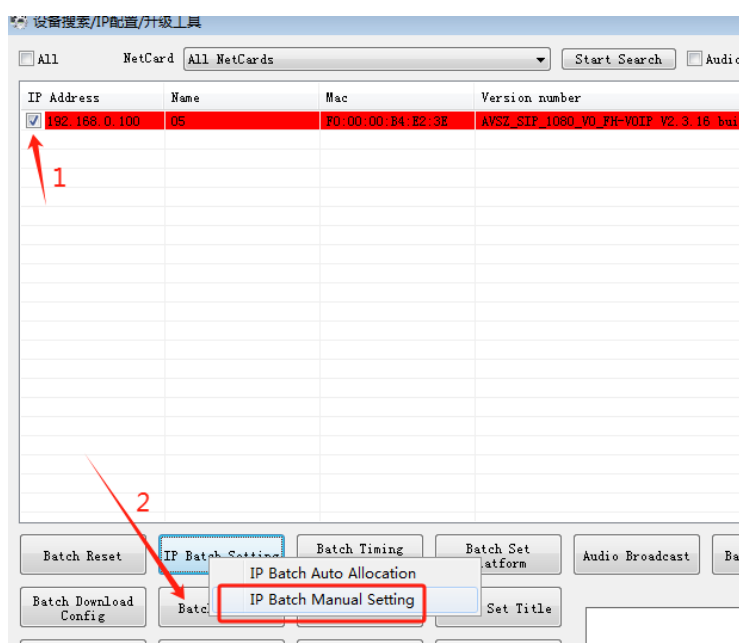


WIFI SPEAKER SETTINGS MANUAL

- 1、Install the servers software and set up the server's ip address(Please refer to the video tutorial)
- 2、Connect the computer with speaker's WIFI "MIFI_9F0C", **enter the password "1234567890"**,
- 3、and set the IP address of the speaker and server IP address using the Dev search tool

DevSearchTool.exe



设备搜索/IP配置/升级工具

☐ All NetCard ☐ Audio ☒ Full screen switching stream Searching

IP Address	Name	Mac	Version number	State	Running time	Model
192.168.0.100	05	F0:00:00:B4:E2:3E	AVSZ_SIP_1080_VO_FH-VOIP V2.3.16 build 20...	Login success	14 Hour49 M...	2023-0

1

Be sure to modify the server IP address only when the status shows " success "

2

Batch Reset IP Batch Setting Batch Timing Maintenance Batch Set Platform Audio Broadcast Batch set info Batch restart Batch add exe Batch upl files

Batch add exe

Server IP 172.114.104.168 1

sub Server Addr 192.168.0.109

Server 6900 2

power open

talk output open

alarm output open

Name 05 3

Timing reboot 3:00:00

FTP ip

FTP port 21

FTP user

FTP path

enable sud ANS ☐ enable

talk alarm ☐ reversed control enable

alarm output ☐ reversed control enable

error ☐ error check enable

enable vid yes

enable log

☐ IO2 cap pic

FTP pwd

IO timing-ctrl 10

serial 9600

alarm period(sec) 10

IO_INE type button

4

modify Cancel

empty means no change

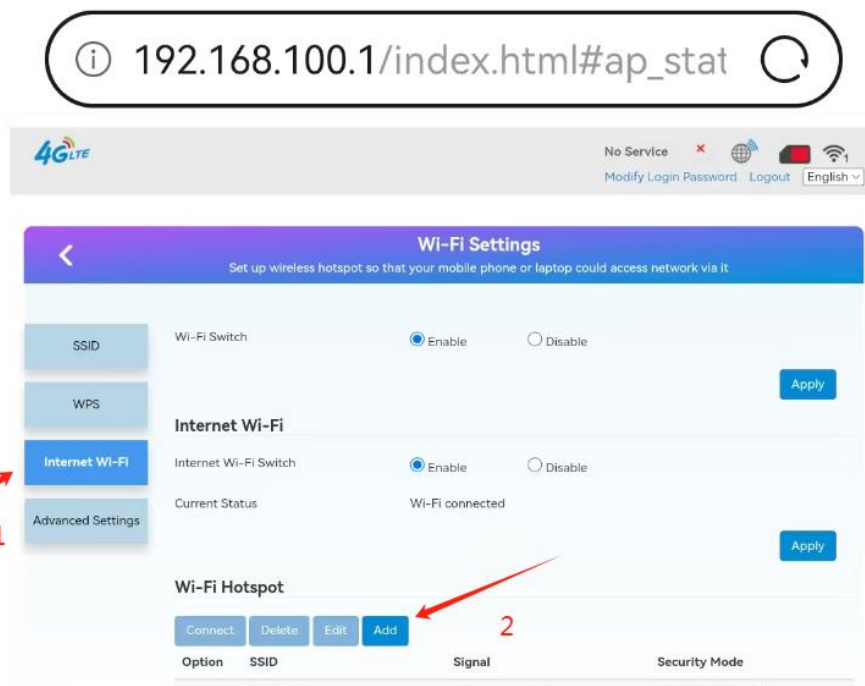
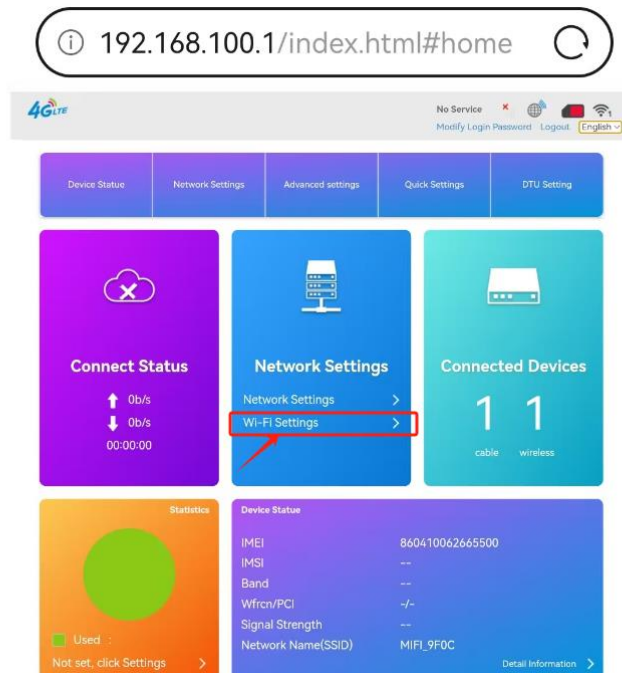
☐ All NetCard ☐ Audio ☒ Full screen switching stream

IP Address	Name	Mac	Version number	State	Running t
192.168.0.100	05	F0:00:00:B4:E2:3E	AVSZ_SIP_1080_VO_FH-VOIP V2.3.16 build 20...	Set up platform configuratio...	14 Hour53

5

Batch Reset IP Batch Setting Batch Timing Maintenance Batch Set Platform Audio Broadcast Batch set info Batch restart Batch add exe

4、 and then enter “192.168.100.1” in your computer browser, password is:admin



192.168.100.1/index.html#ap_stat

4G LTE

No Service
Modify Login Password Logout English

Wi-Fi Settings

Set up wireless hotspot so that your mobile phone or laptop could access network via it

SSID

WPS

Internet Wi-Fi

Advanced Settings

Wi-Fi Switch

☒ Enable ☐ Disable

Apply

Add Wi-Fi Hotspot

Network Name(SSID) * 705

Security Mode WPA-PSK/WPA2-PSK

WPA Algorithms ☐ TKIP ☒ AES ☐ AUTO

Pass Phrase *

☐ Display Password

Refresh Apply Back

SSID	Signal	Security Mode
<input checked="" type="radio"/> 705		WPA-PSK/WPA2-PSK
<input type="radio"/> CU_d7E5		WPA-PSK/WPA2-PSK
<input type="radio"/> LT668		WPA-PSK/WPA2-PSK
<input type="radio"/> CMCC-9654		WPA-PSK/WPA2-PSK